



# Title Plan - LT 615937

---

**Survey Number** LT 615937  
**Surveyor Reference** 1303 - Guthrie  
**Surveyor** Julian Raymond Thom  
**Survey Firm** Kotare Consultants Ltd  
**Surveyor Declaration**

---

## Survey Details

**Dataset Description** Lots 1 and 2 Being a Subdivision of Lot 19 DPS 88315  
**Status** Initiated  
**Land District** South Auckland  
**Submitted Date**  
**Survey Class** Class B  
**Survey Approval Date**  
**Deposit Date**

---

## Territorial Authorities

Taupo District

---

## Comprised In

RT SA69D/824

---

## Created Parcels

Parcels	Parcel Intent	Area	RT Reference
Lot 1 Deposited Plan 615937	Fee Simple Title	2.0450 Ha	1232334
Lot 2 Deposited Plan 615937	Fee Simple Title	2.5700 Ha	1232335
Area BB Deposited Plan 615937	Easement		
<b>Total Area</b>		<u>4.6150 Ha</u>	

## LT 615937 Schedule/Memorandum

Land registration district  
South Auckland

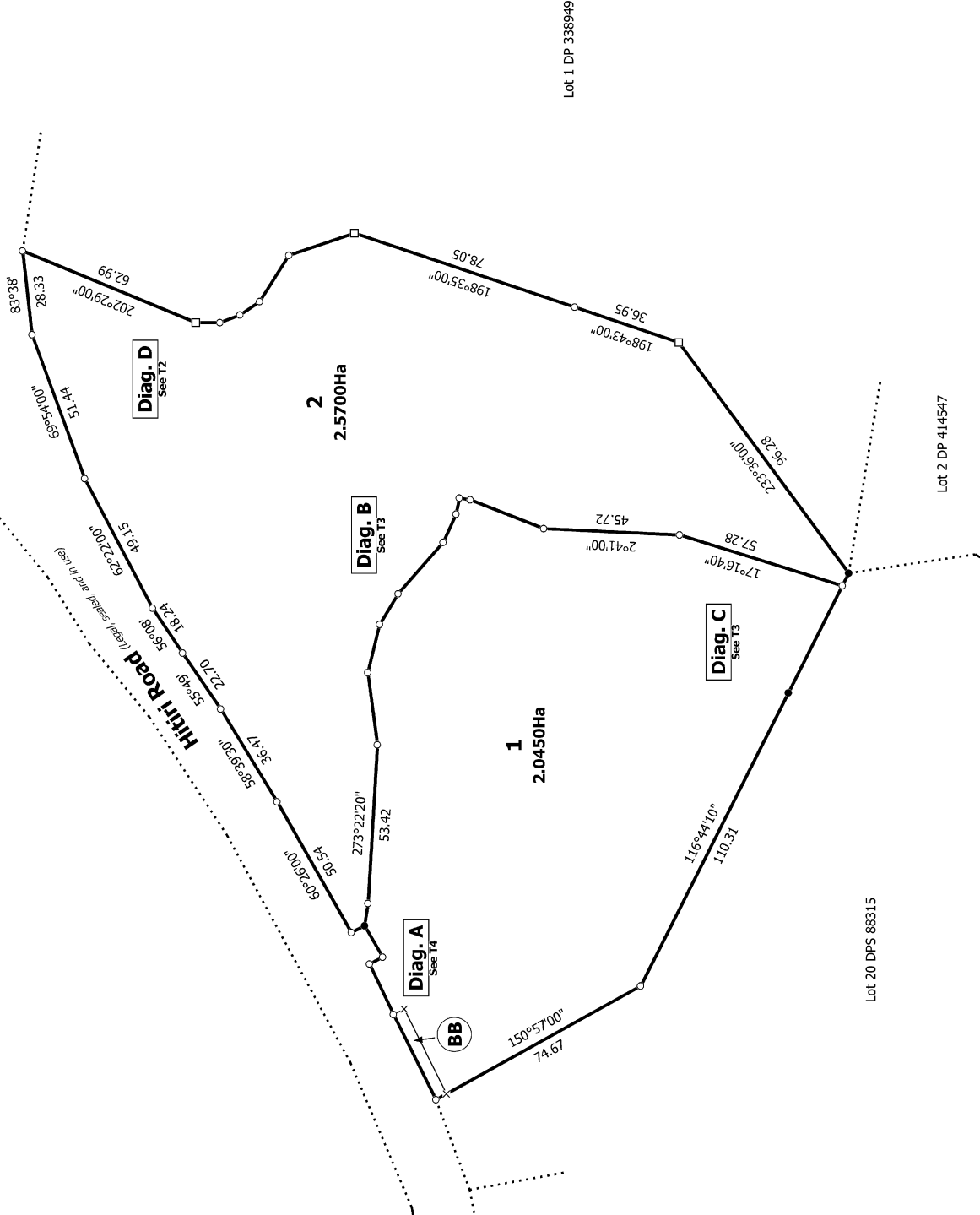
Territorial authority  
Taupo District

### Schedule of Existing Easements in Gross

Parcels shown with a prefix of *HL*- include height-limited boundaries

PURPOSE	SHOWN	BURDENED LAND	CREATING DOCUMENT
Right to convey water	BB	Lot 1	B673140.13

---



T 1/4

Title Plan  
LT 615937  
DRAFT

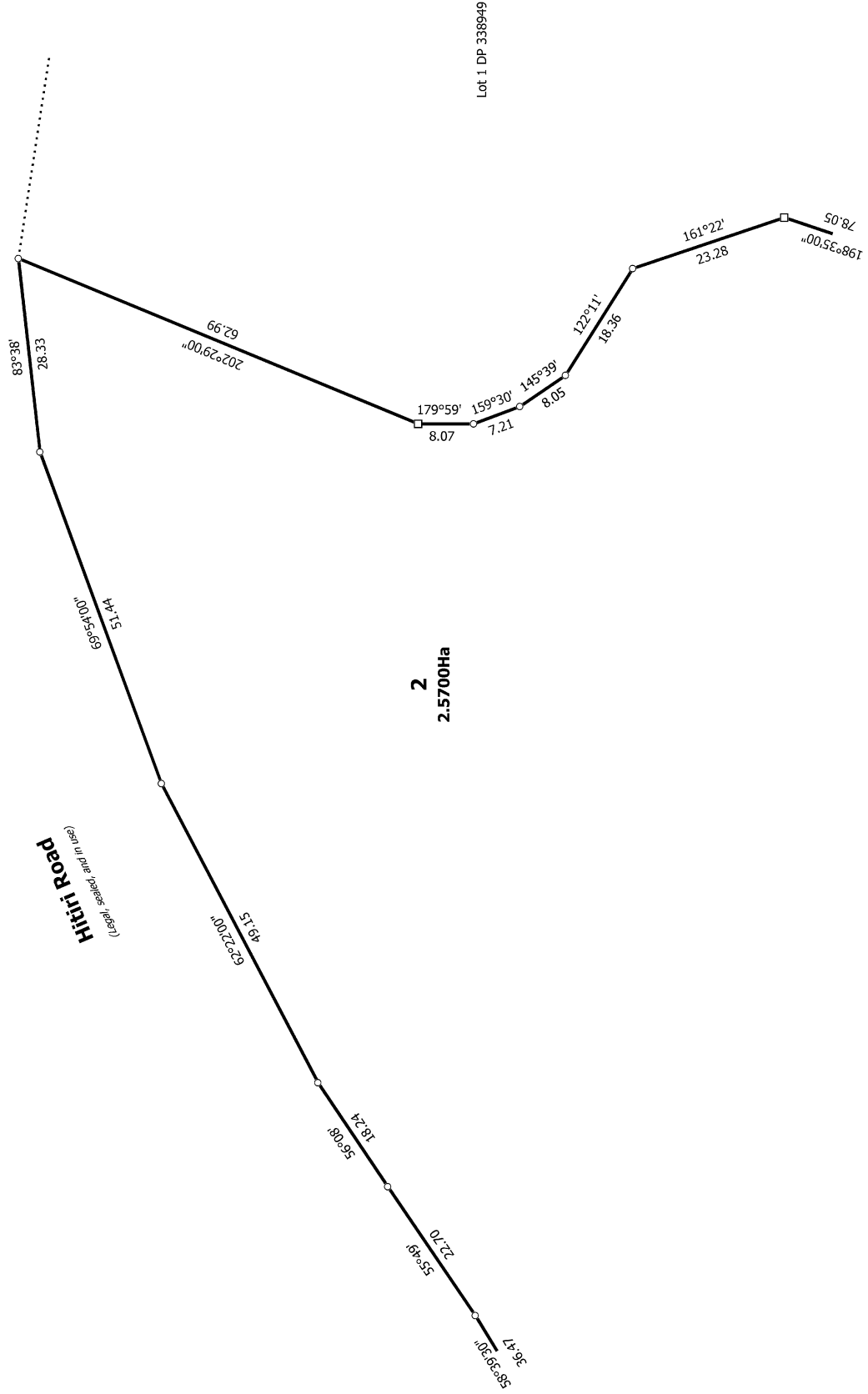
Surveyor: Julian Raymond Thom  
Firm: Kotare Consultants Ltd

Lots 1 and 2 Being a Subdivision of Lot 19 DPS 88315

Land District: South Auckland  
Digitally Generated Plan  
Generated on: 31/03/2025 5:51pm Page 3 of 6



Diag. D



T 2/4

Land District: South Auckland

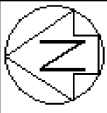
Digitally Generated Plan

Generated on: 31/03/2025 5:51pm Page 4 of 6

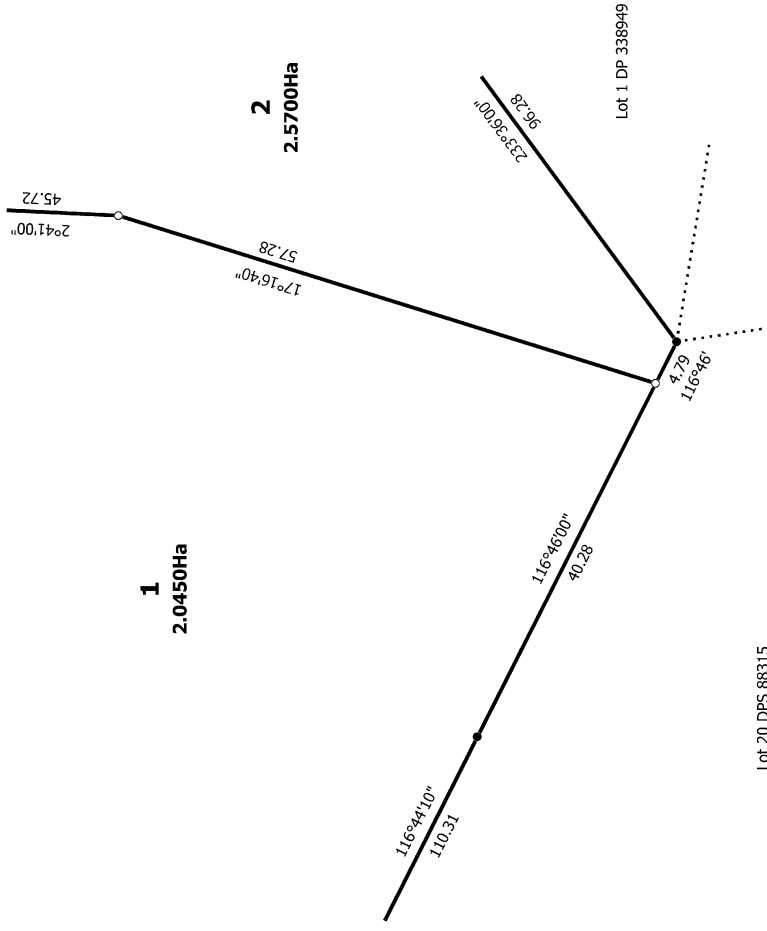
Lots 1 and 2 Being a Subdivision of Lot 19 DPS 88315

Surveyor: Julian Raymond Thom  
Firm: Kotare Consultants Ltd

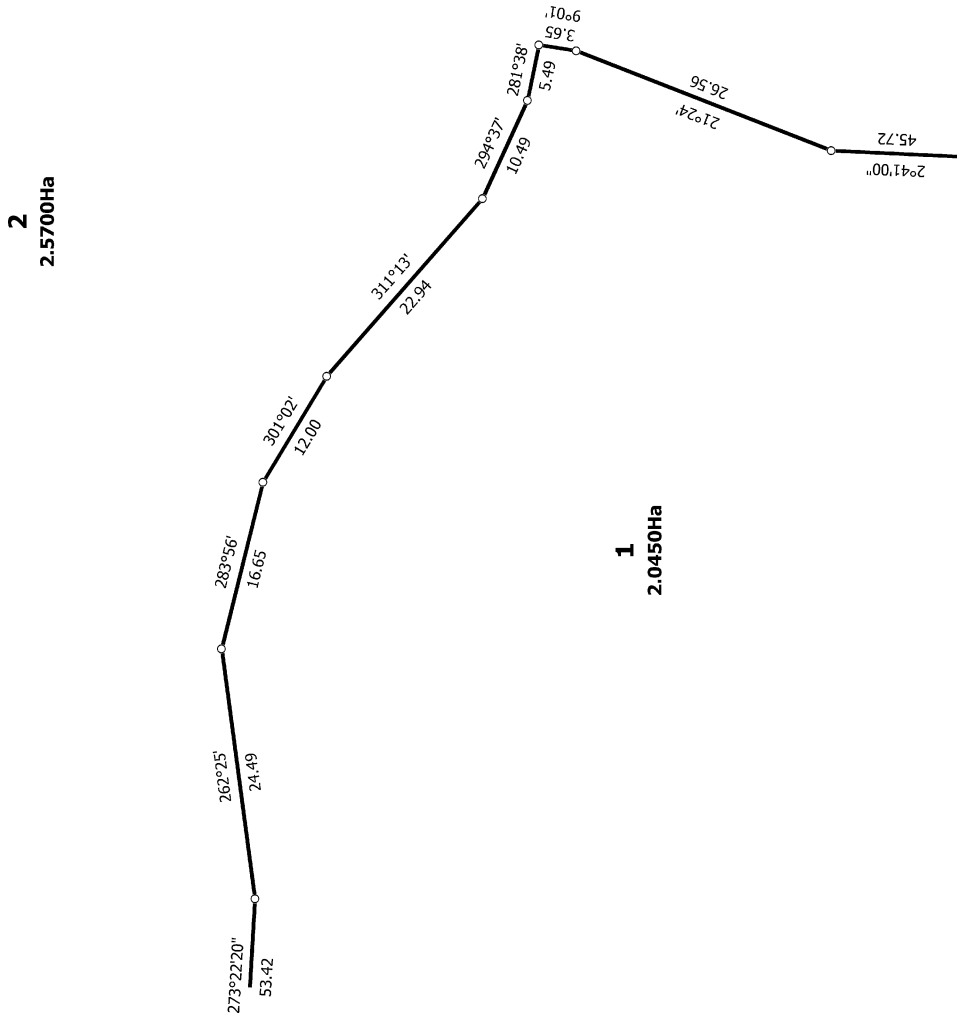
Title Plan  
LT 615937  
DRAFT



Diag. C



Diag. B



T 3/4

Land District: South Auckland

Digitally Generated Plan

Generated on: 31/03/2025 5:51pm Page 5 of 6

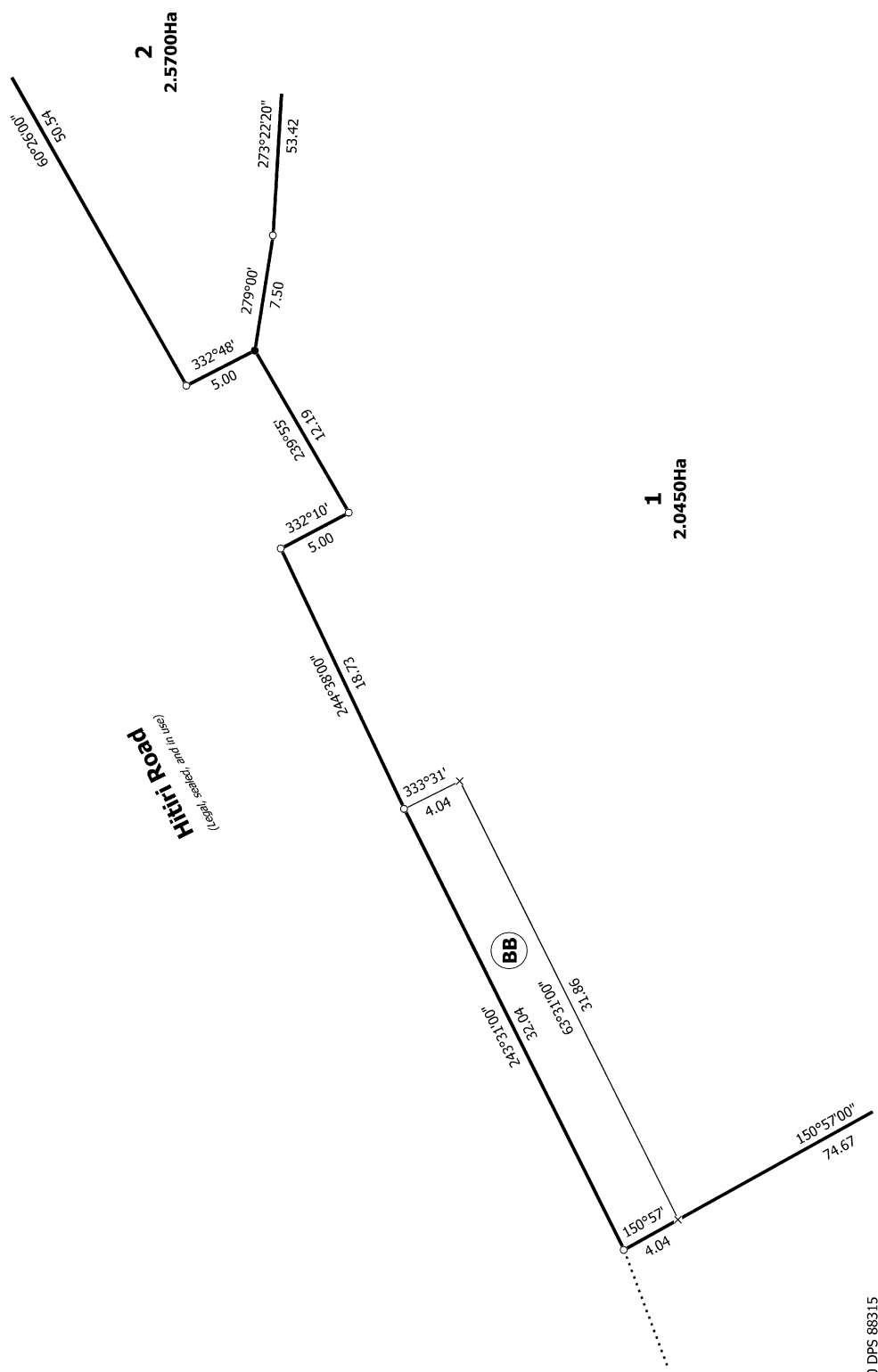
Lots 1 and 2 Being a Subdivision of Lot 19 DPS 88315

Surveyor: Julian Raymond Thom  
Firm: Kotare Consultants Ltd

Title Plan  
LT 615937  
DRAFT



Diag. A



Lot 20 DPS 88315

T 4/4

<p>Land District: South Auckland</p> <p><b>Digitally Generated Plan</b></p> <p>Generated on: 31/03/2025 5:51pm Page 6 of 6</p>	<p><b>Lots 1 and 2 Being a Subdivision of Lot 19 DPS 88315</b></p>	<p>Surveyor: Julian Raymond Thom Firm: Kotare Consultants Ltd</p>	<p>Title Plan LT 615937 DRAFT</p>
--	--	---	---