



RENTAL APPRAISAL

6 JELICOE STREET, SOUTH NEW BRIGHTON, CHRISTCHURCH

2 bedroom / 1 bathroom / 2 garage

\$550 - \$600 per week

Tucked away down a private drive just metres from the beach, this standalone home offers space, privacy, and easy coastal living. The open-plan living area flows to a north-facing patio, while two generous bedrooms (including an especially spacious master) provide comfortable accommodation. A modern bathroom with separate toilet, heat pump with heat transfer system, and gas hot water ensure year-round comfort. The carpeted internal-access double garage offers secure parking, storage, or flexible hobby space, with additional off-street parking available on the private drive.

Our rental appraisals are based on an unfurnished property, current market conditions using data from Corelogic, Trademe and Tenancy Services.

Comparable Rentals

1 2/34 MOUNTBATTEN STREET, NEW BRIGHTON, CHRISTCHURCH, 8061



🛏️ 2 🚿 1 🚗 1 🏠 - 🏠 90m²

Age 1970 DOM 6 days Capital Value \$410,000

Listing Date 28-Feb-26 Distance 1.84km CV Date 01-Aug-25

Listing Price \$480/week

2 3/246 MARINE PARADE, NEW BRIGHTON, CHRISTCHURCH, 8061



🛏️ 2 🚿 1 🚗 2 🏠 - 🏠 120m²

Age 1990 DOM 29 days Capital Value \$560,000

Listing Date 05-Feb-26 Distance 2.39km CV Date 01-Aug-25

Listing Price \$570/week

3 8 SUNSHINE LANE, NEW BRIGHTON, CHRISTCHURCH, 8083



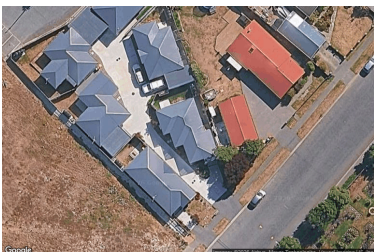
🛏️ 2 🚿 1 🚗 1 🏠 - 🏠 82m²

Age 2023 DOM 1 day Capital Value \$580,000

Listing Date 05-Mar-26 Distance 2.84km CV Date 01-Aug-25

Listing Price \$560/week

4 2/9 RAUPO STREET, BROMLEY, CHRISTCHURCH, 8062



🛏️ 2 🚿 1 🚗 1 🏠 262m² 🏠 99m²

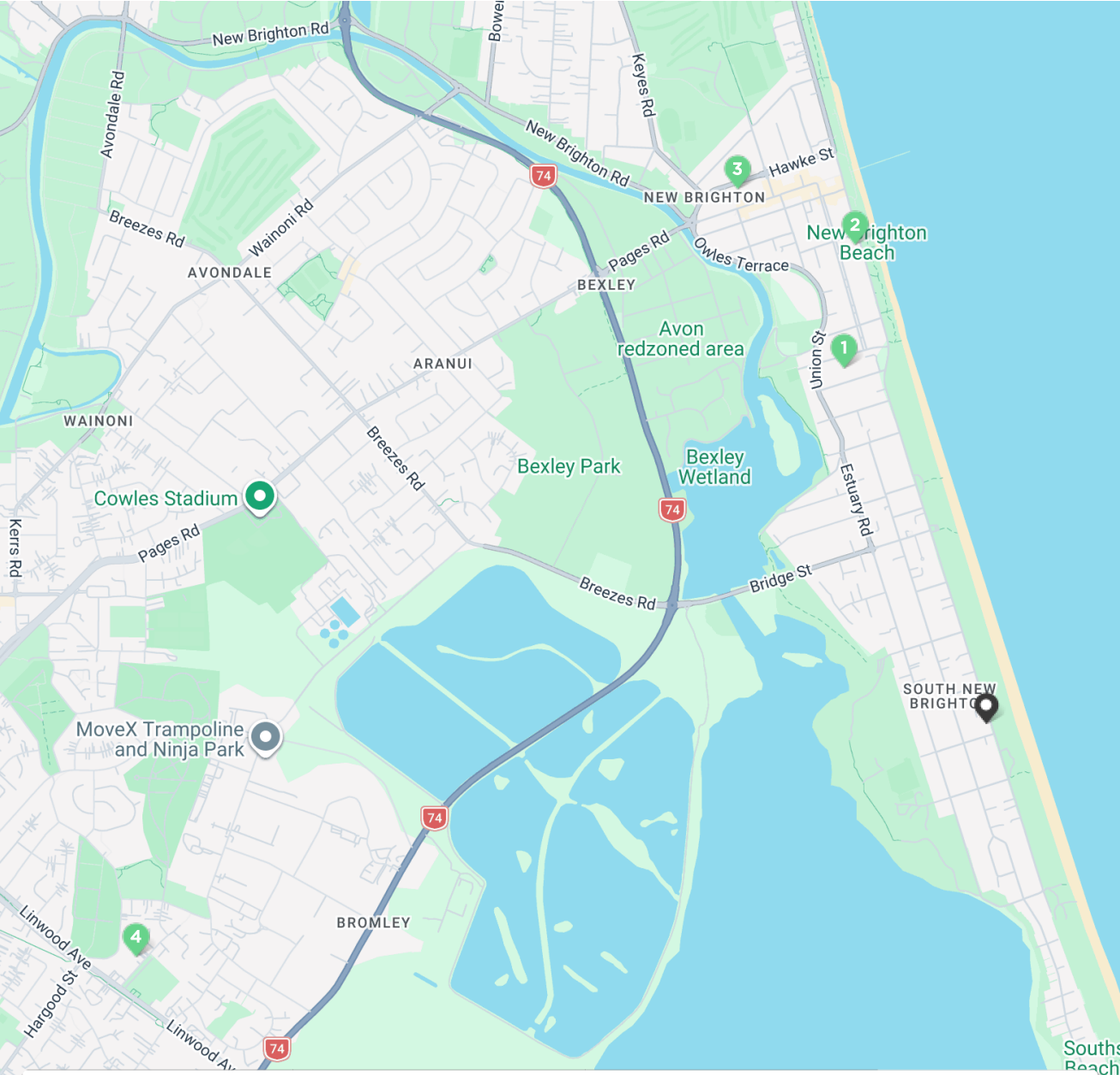
Age 2022 DOM 1 day Capital Value \$510,000

Listing Date 05-Mar-26 Distance 4.27km CV Date 01-Aug-25

Listing Price \$550/week

DOM = Days on market * This data point was edited by the author of this CMA and has not been verified by Cotality

Comps Map: Rentals



1 2/34 MOUNTBATTEN STREET, NEW BRIGHTON, CHRISTCHURCH, 8061	2	1	1	\$480
2 3/246 MARINE PARADE, NEW BRIGHTON, CHRISTCHURCH, 8061	2	1	2	\$570
3 8 SUNSHINE LANE, NEW BRIGHTON, CHRISTCHURCH, 8083	2	1	1	\$560
4 2/9 RAUPO STREET, BROMLEY, CHRISTCHURCH, 8062	2	1	1	\$550

* This data point was edited by the author of this CMA and has not been verified by Cotality

FRASER FLYNN

Jackie Youngman

Business Development Manager

Hi, I'm Jackie from Fraser Flynn.

We specialise in managing investment properties for owners who value clear communication, reliable tenants, and a high standard of service. We understand the unique needs of modern property management.

Our team is REINZ Accredited and Level 4 Certified, and we're proud to be backed by over 180 five-star reviews from clients who appreciate our dedication and professionalism.

Whether you're ready to get started or just want to ask a few questions, feel free to get in touch – I'm always happy to help.


Look forward to hearing from you soon,

Jackie




Get a Rental Appraisal

 jackie@fraserflynn.co.nz

 021 522 399

 fraserflynn.co.nz

 facebook.com/fraserflynnpm

 [@fraserflynnpm](https://www.instagram.com/fraserflynnpm)

© 2022 - 2025 Fraser Flynn, All Rights Reserved.

Disclaimer

© Copyright Cotality NZ Limited (Cotality). Cotality and its licensors are the sole and exclusive owners of all rights, title and interest (including intellectual property rights) subsisting in this publication, including any data, analytics, statistics and other information contained in this publication. All rights reserved.

While Cotality uses commercially reasonable efforts to ensure the Cotality Data is current, Cotality does not warrant the accuracy, currency or completeness of the Cotality Data and to the full extent permitted by law excludes all loss or damage howsoever arising (including through negligence) in connection with the Cotality Data.

This publication reproduces materials and content owned or licenced by CoreLogic NZ Limited trading as Cotality (Cotality) and may include data, statistics, estimates, indices, photographs, maps, tools, calculators (including their outputs), commentary, reports and other information (Cotality Data).

The Cotality Data provided in this publication is of a general nature and should not be construed as specific advice or relied upon in lieu of appropriate professional advice. While Cotality uses commercially reasonable efforts to ensure the Cotality Data is current, Cotality does not warrant the accuracy, currency or completeness of the Cotality Data and to the full extent permitted by law excludes all loss or damage howsoever arising (including through negligence) in connection with the Cotality Data.

This publication contains data and statistics provided by Land Information New Zealand (LINZ) and is made available from the subject property's Record of Title provided by LINZ that has not been changed in any way by CoreLogic is not a substitute for a Record of Title. LINZ, in its sole discretion, may require you to amend, delete the LINZ data at any time.